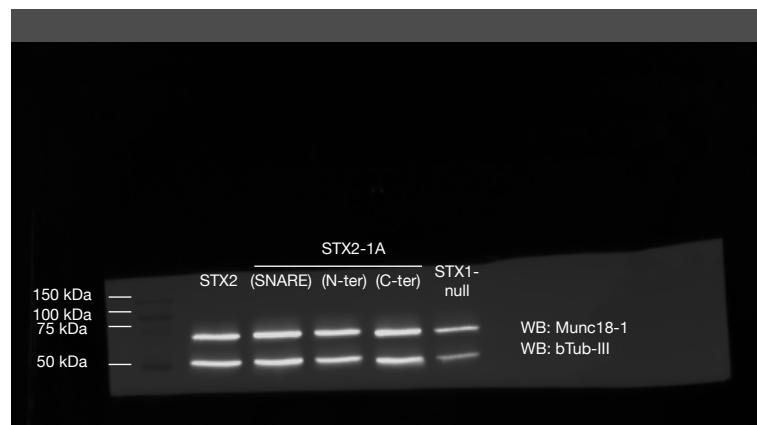


Neuronal lysates, blot **Figure 5C**. Superposition of detected protein and the image of the marker, Blot's opacity was reduced 30% for the visualization of the marker  
Blots were cut between 50 and 37kDa for detection purposes



Neuronal lysates, blot **Figure 5D**. Superposition of detected protein and the image of the marker, Blot's opacity was reduced 30% for the visualization of the marker